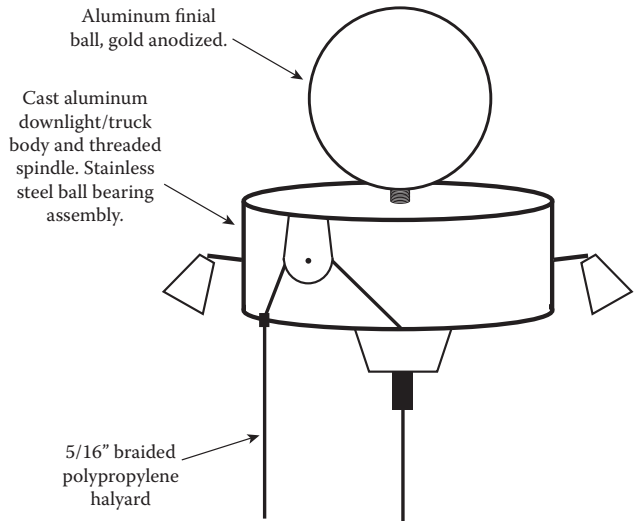
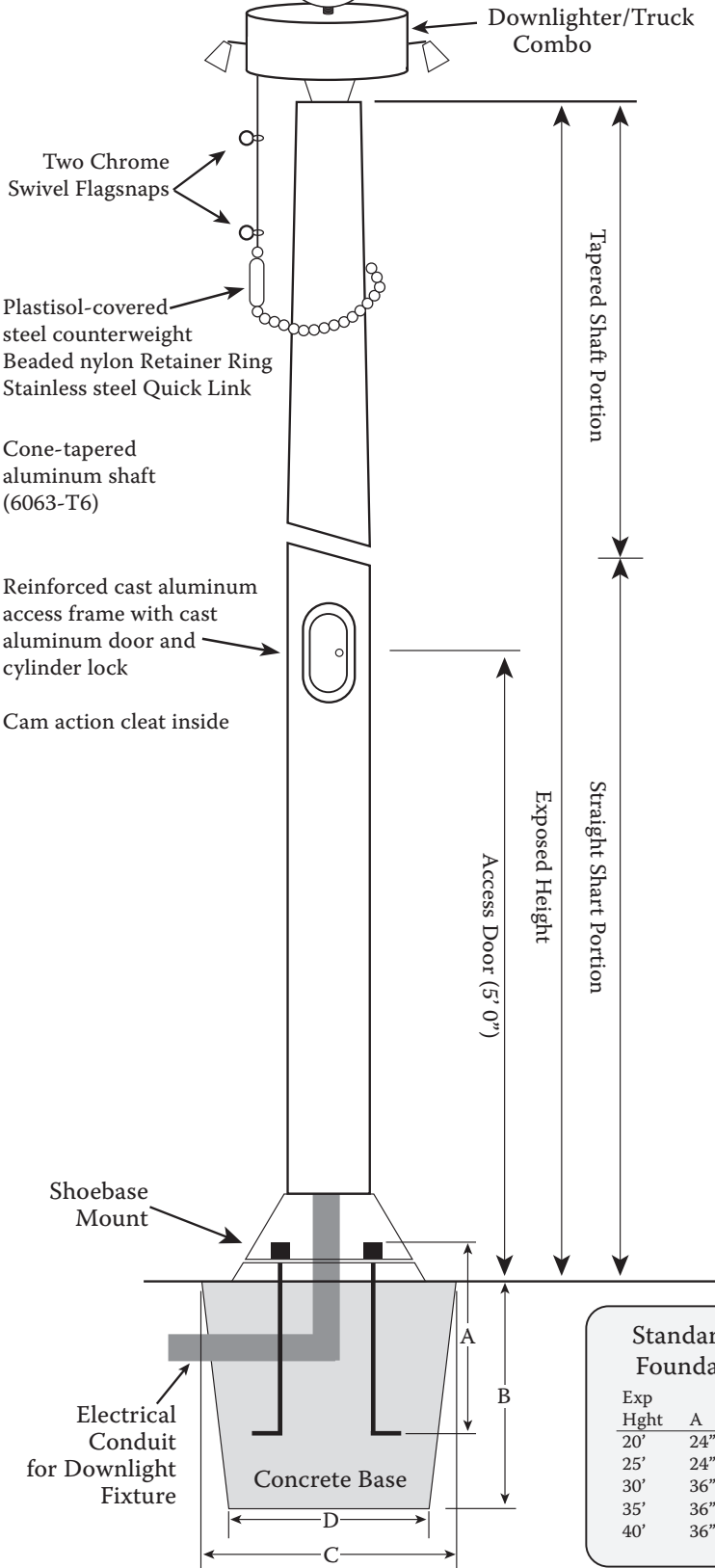


____" Finial Ball
Gold Anodized Finish

NightMaster Internal Halyard Downlight Flagpole



(512) 847-0010 - (800) 385-5605 - EagleMountainFlag.com

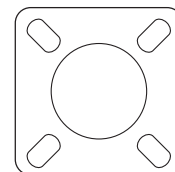


Anchor Base: Cast from A356 alloy aluminum, the shoe base shall be heat-treated to a T-6 condition after attachment to the shaft. The shaft shall be inserted into the shoe base casting. The casting and shaft shall be joined by a continuous circumferential weld at the outside top and inside bottom of the shoe base. A spun aluminum flash collar shall be supplied, unless otherwise specified.

Anchor Bolts: Each pole shall include four anchor bolts, two hex nuts, two flat washers, and one lock washer, sized to match the anchor bolts.

Lighting Install: The end user is required to tap a hole at 3/8" approximately 1-2 inches below the top of the pole for the wiring (this should be low enough to clear the bottom of the truck threads on the inside). This hole allows the wiring to re-enter the pole, concealing it from being exposed to weather extremities. The reason this hole is not tapped prior to shipment is due to placement. The hole must be tapped on the opposite side of the truck pulley, just below the thread. Therefore it must be done in the field, in order to ensure accuracy. The hole is to be tapped at 3/8" and rounded out to prevent wires from wearing against a rough edge. This does not, in any way, damage the structural integrity of the pole, nor voids the warranty that we provide. However, it does allow for easy installation of the lighting for your new Eagle United Nightmaster Downlighter Flagpole.

Base



Standard Recommended Foundation Dimensions

Exp Hght	A	B	C	D
20'	24"	3'6"	30"	24"
25'	24"	3'6"	30"	24"
30'	36"	3'6"	30"	24"
35'	36"	4'0"	36"	30"
40'	36"	4'6"	42"	36"

Shaft Dia.	Bolt Circle	Bolt Proj.	Bolt Size	Base Size
5"	7-3/8" - 9-1/2"	3-1/4"	3/4" x 24"	9-1/4"
6"	8-3/4" - 10"	3-1/4"	1" x 36"	10-1/4"
7"	10-5/16" - 11-3/8"	3-1/4"	1" x 36"	10-5/8"

WARNING: Extreme caution should be exercised when installing flagpoles near overhead power lines, or in the vicinity of buried cables.