

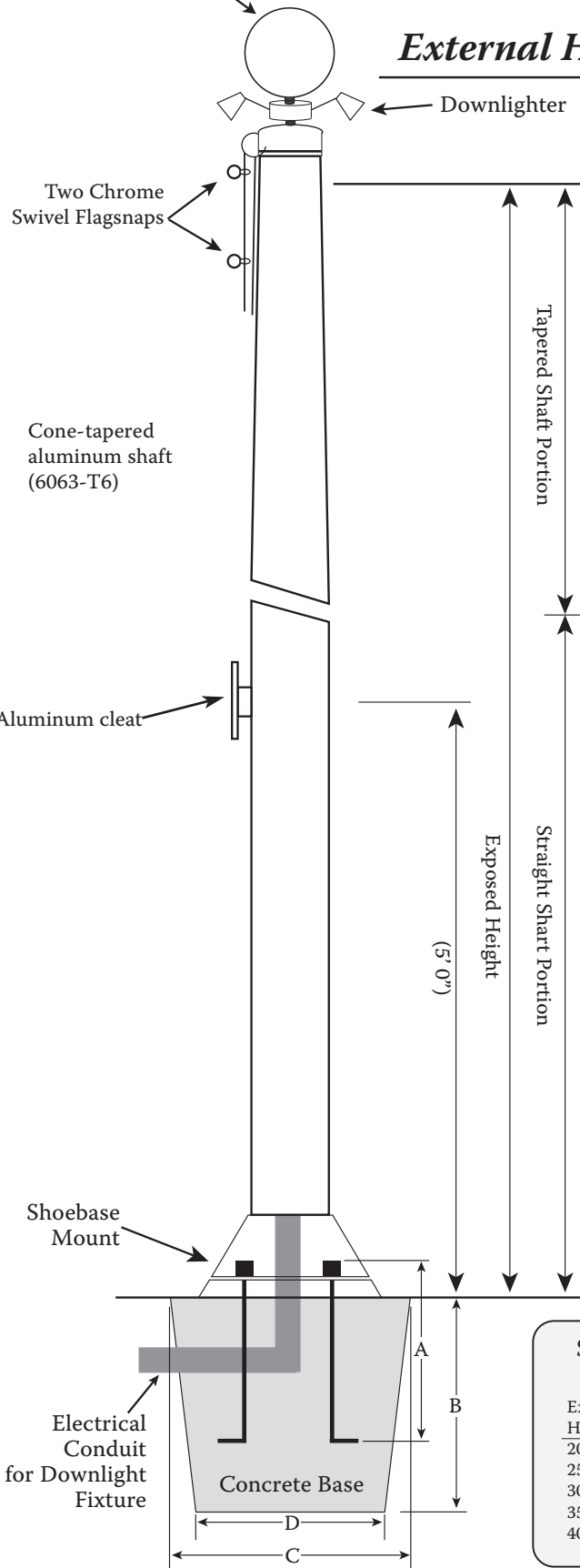
\_\_\_\_" Finial Ball  
Gold Anodized Finish

# NightHawk

## External Halyard Downlight Flagpole



(512) 847-0010 - (800) 385-5605 - EagleMountainFlag.com



This external halyard system utilizes the traditional method for raising and lowering flags. Architectural Grade cone-tapered aluminum flagpoles suitable for use in most wind conditions flying maximum size or multiple flags. Exposed Heights of 20' to 50'. A selection of shaft diameters and wall thickness offered for most exposed heights to meet needs and to offer the best overall value.

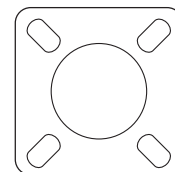
### Standard fittings :

- External Halyard
- Spun Aluminum Ball
- Revolving Truck Assembly
- Nylon braided halyard
- Spun Aluminum Collar
- Shoe base mount to accept electrical conduit
- Dual 20-watt LED downlighter
- 360-degree coverage achievable with proper aiming
- 2 Snap Hooks
- Cast Aluminum Cleat

**Anchor Base:** Cast from A356 alloy aluminum, the shoe base shall be heat-treated to a T-6 condition after attachment to the shaft. The shaft shall be inserted into the shoe base casting. The casting and shaft shall be joined by a continuous circumferential weld at the outside top and inside bottom of the shoe base. A spun aluminum flash collar shall be supplied, unless otherwise specified.

**Anchor Bolts:** Each pole shall include four anchor bolts, two hex nuts, two flat washers, and one lock washer, sized to match the anchor bolts.

### Base



### Standard Recommended Foundation Dimensions

Exp Hght	A	B	C	D
20'	24"	3'6"	30"	24"
25'	24"	3'6"	30"	24"
30'	36"	3'6"	30"	24"
35'	36"	4'0"	36"	30"
40'	36"	4'6"	42"	36"

Shaft Dia.	Bolt Circle	Bolt Proj.	Bolt Size	Base Size
5"	7-3/8" - 9-1/2"	3-1/4"	3/4" x 24"	9-1/4"
6"	8-3/4" - 10"	3-1/4"	1" x 36"	10-1/4"
7"	10-5/16" - 11-3/8"	3-1/4"	1" x 36"	10-5/8"

**WARNING:** Extreme caution should be exercised when installing flagpoles near overhead power lines, or in the vicinity of buried cables.