

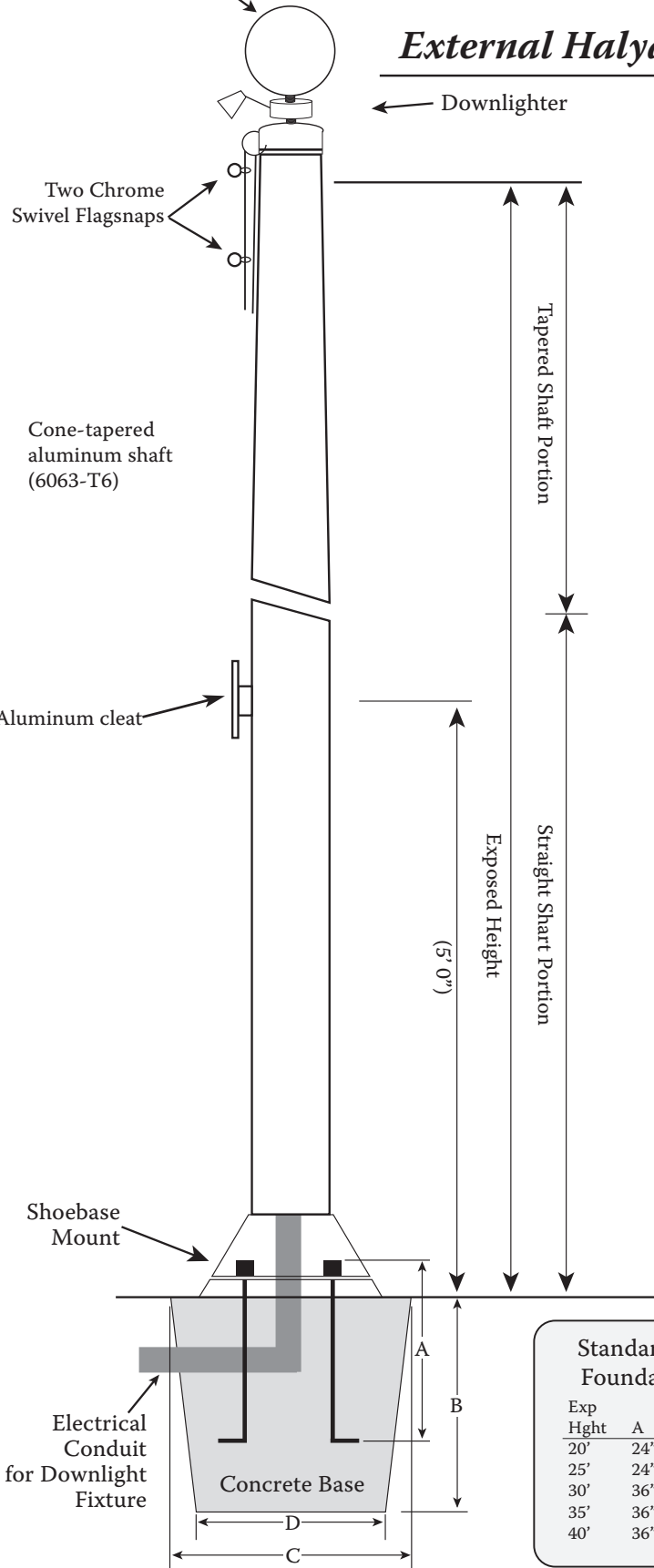
____" Finial Ball
Gold Anodized Finish

NightGuard

External Halyard Downlight Flagpole



(512) 847-0010 - (800) 385-5605 - EagleMountainFlag.com



These flagpoles are manufactured to the same high standards and with the same shaft material and process as the larger NightHawk line of architecturally designed flagpoles. NightGuard flagpoles are gracefully tapered with scaled down proportions perfect for home, apartment or small business.

Standard fittings :

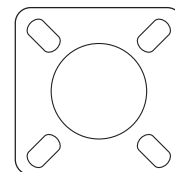
- External Halyard
- Spun Aluminum Ball
- Cap Style Stationary Truck
- Nylon braided halyard
- Shoebase Mount to accept electrical conduit
- Single LED Downlight
- 2 Snap Hooks
- Cast Aluminum Cleat

Upgrades include spun or cast aluminum collars, stationary cast aluminum ball/truck assemblies, revolving truck assembly, and more. NightGuard shafts are available in single or multiple sections to allow for economic shipping alternatives.

Anchor Base: Cast from A356 alloy aluminum, the shoe base shall be heat-treated to a T-6 condition after attachment to the shaft. The shaft shall be inserted into the shoe base casting. The casting and shaft shall be joined by a continuous circumferential weld at the outside top and inside bottom of the shoe base. A spun aluminum flash collar shall be supplied, unless otherwise specified.

Anchor Bolts: Each pole shall include four anchor bolts, two hex nuts, two flat washers, and one lock washer, sized to match the anchor bolts.

Base



Standard Recommended Foundation Dimensions

Exp Hght	A	B	C	D
20'	24"	3'6"	30"	24"
25'	24"	3'6"	30"	24"
30'	36"	3'6"	30"	24"
35'	36"	4'0"	36"	30"
40'	36"	4'6"	42"	36"

Shaft Dia.	Bolt Circle	Bolt Proj.	Bolt Size	Base Size
5"	7-3/8" - 9-1/2"	3-1/4"	3/4" x 24"	9-1/4"
6"	8-3/4" - 10"	3-1/4"	1" x 36"	10-1/4"
7"	10-5/16" - 11-3/8"	3-1/4"	1" x 36"	10-5/8"

WARNING: Extreme caution should be exercised when installing flagpoles near overhead power lines, or in the vicinity of buried cables.