

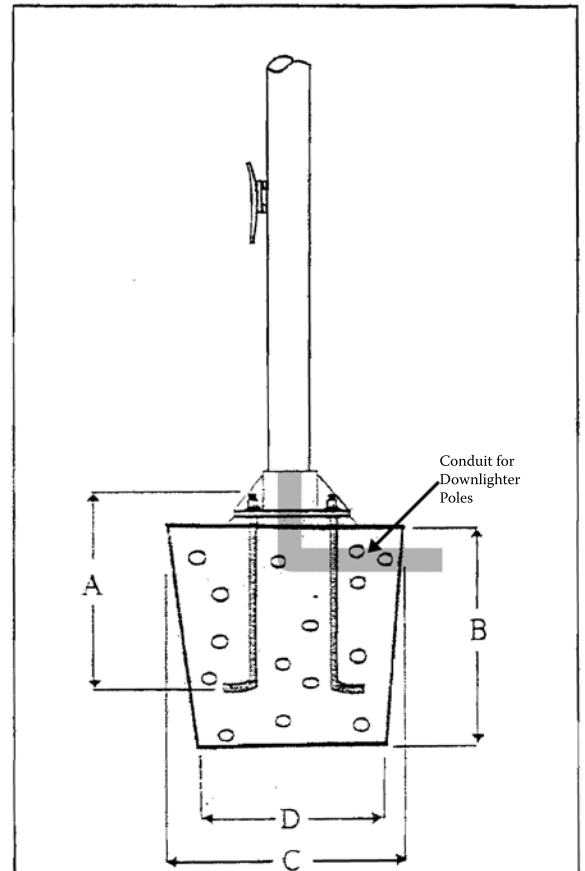
Shoebase Mount cone tapered aluminum

Specifications:

GENERAL. All Concord Continental, Independence and Sentry flagpole shafts can be shoe base mounted if necessary. These shafts are tapered from all new, seamless 6063 alloy aluminum tubing, and are heat-treated to a T-6 temper. Other than for the mounting method, the specifications shown for Continental, Independence and Sentry ground set flagpoles shall apply.

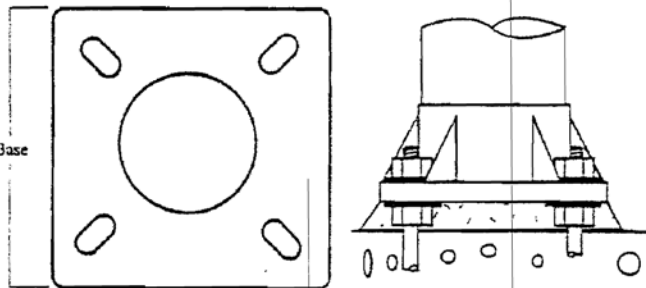
ANCHOR BASE. Cast from A356 alloy aluminum, the shoe base shall be heat-treated to a T-6 condition after attachment to the shaft. The shaft shall be inserted into the shoe base casting. The casting and shaft shall be joined by a continuous circumferential weld at the outside top and inside bottom of the shoe base. A spun aluminum flash collar shall be supplied with each shoe base flagpole, unless otherwise specified.

ANCHOR BOLTS. Each shoe base flagpole shall include four anchor bolts, two hex nuts, two flat washers and one lock washer, sized to match the anchor bolts.



Standard Recommended Foundation Dimensions

Exp Hght	A	B	C	D
20'	24"	3'6"	30"	24"
25'	24"	3'6"	30"	24"
30'	36"	3'6"	30"	24"
35'	36"	4'0"	36"	30"
40'	36"	4'6"	42"	36"
45'	36"	5'0"	48"	42"
50'	40"	6'0"	48"	42"
60'	40"	7'0"	48"	42"
70'	40"	8'0"	60"	48"
80'	40"	9'0"	60"	48"



Shaft Dia.	Bolt Circle	Bolt Projection	Bolt Size	Base Size
5"	7 3/8" - 9 1/2"	3 1/4"	3/4"x24"	9 1/4"
6"	8 3/4" - 10"	3 1/4"	1"x36"	10 1/4"
7"	10 5/16" - 11 3/8"	3 1/4"	1"x36"	10 5/8"
8"	11" - 12 1/8"	3 1/4"	1"x36"	11 5/8"
10"	14 1/8" - 16 1/4"	3 1/4"	1"x40"	14 5/8"
12"	16" - 18"	3 1/4"	1"x40"	17 1/8"

Warning: Extreme caution should be exercised when installing flagpoles near overhead powerlines, or in the vicinity of buried cables.